



Programmable Spray Lubricator

The Programmable Spray Lubricator complements Mark One's renowned line of Blankwashers. The unit is used to apply precision oil coatings to blanks providing efficient processing through the stamping operations.

The Programmable Spray Lubricator (re-oiler) operates in conjunction with a Blankwasher, as a stand-alone unit or incorporated into the destacking and press loading equipment.



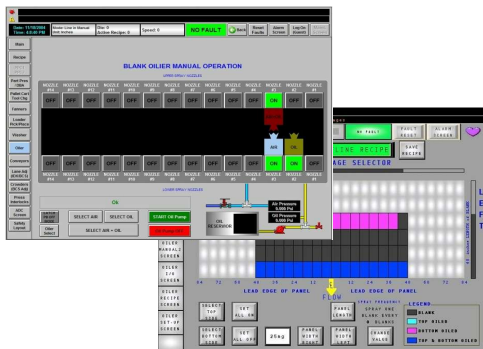
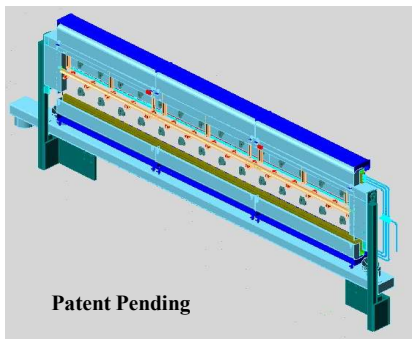
- Applies Precision Coatings
 - Top Only, Bottom Only, Both Top & Bottom
 - Specific Points
 - Pass-Thru
- Increase Production
 - Solves Forming Problems
 - Extends Die Life
 - Eliminates Housekeeping Problems
- Minimum Footprint
 - Less Than 7 Inches (102mm) Wide!!
 - Retrofit Into Existing Operations
- Benefits
 - Minimize Fluid Consumption
 - Lubricate Only Where Needed
 - Heavier Concentration For Problem Areas
 - Easy to Program



Programmable Spray Lubricator

- Key Elements

- Compact Housing
- Long Life Spray Nozzles
- Robust Construction
- Precision Fluid Placement
- Precision Volume Control
- “Mist Free” No Mess Operation
- Easily Programmed
- Automatic Speed Recognition



- Precision Fluid Control
 - Low Volume - Low Pressure Spray Operating System
 - Innovative Spray Nozzles (Patented)
 - Long Life (over 3 times competition)
 - Non-Atomizing
- Precision Volume Control
 - Programmable Film Thickness
 - 50 mg to 200 mg per square foot (15mg to 60 mg/meter squared)
 - Custom Spray Point Selection
- Integrated Controls
 - Touch Screen Programming
 - Easily Modified
 - Individual Nozzle Set Parameters
 - Upper & Lower On/Off Selection
 - No Spray
 - Top Only, Bottom Only
 - Top & Bottom
 - Spray Point Selection
 - 6” x 12” (150mm x 300mm) Grid Pattern Selection
 - Select Film Thickness
 - Program Part Specific Recipes
 - Create & Store By Part Recipe
 - Manual Or Automatic Recipe Recall
- Complete Fluid System